

SMART Business Starts with SMARTLOGIX™

PROJECT MANAGEMENT & TRAINING

PROFESSIONAL SERVICES



SMARTlogix **Project Management** and **Training Services** help ensure the **smooth integration** of SMARTTruck into your current business process. Your project manager will serve as a **single point of contact** to help identify important details and make sure deadlines are met.

Professional Services were established to ensure adherence to our founding principle that states: "We will succeed by making the success of our customers our highest priority." At SMARTlogix, we take your decision to invest in us seriously and we don't rest until.....well, we don't rest.

For more information about SMARTlogix' Professional Services call us today at 803-547-8265 or visit our Web site at www.smartlogixinc.com.



PROJECT MANAGEMENT & TRAINING

Your SMARTlogix Project Manager collaborates with your management team to ensure the success of your SMARTruck launch.

After the SMARTruck contract is approved we establish contact with key personnel and collect the data required for a smooth and complete transition.

The launch process typically requires six weeks for a 5-10 truck implementation.

Project Management

ACTIVITIES:

- Provide Project Management
- Develop a Project Timeline
- Facilitate Customer Survey
- On-Site Visit to:

- Finalize Customer Survey
- Review Truck Requirements
- Plan Back Office Integration

- Develop Hardware Installation Plan
- Train Dispatch and Driver via the Web

Customer Follow-up to:

- Facilitate Customer Satisfaction
- Interview and Questionnaire

DELIVERABLES:

- Project Timeline
- Certified SMARTruck Hardware
- Validated SMARTlynx Install
- Operational System
- Handoff to 24X7 Support

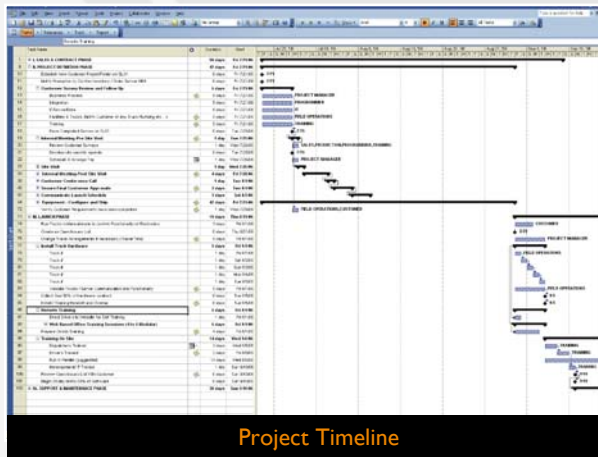
Training

ACTIVITIES:

- Online Instructor Lead Dispatch Training
- On-site Dispatch Training
- On-site Driver Training
- Follow up Training Review
- Online Major Release Update Training

DELIVERABLES:

- Driver Manuals and Troubleshooting Guide
- Dispatch Manuals



Project Timeline



SMARTruck Hardware Installation



On-site Training

